

0 200 400m

LEGEND

— 500 m Study Area

Rev.	Description of Revision	Date	Chk.

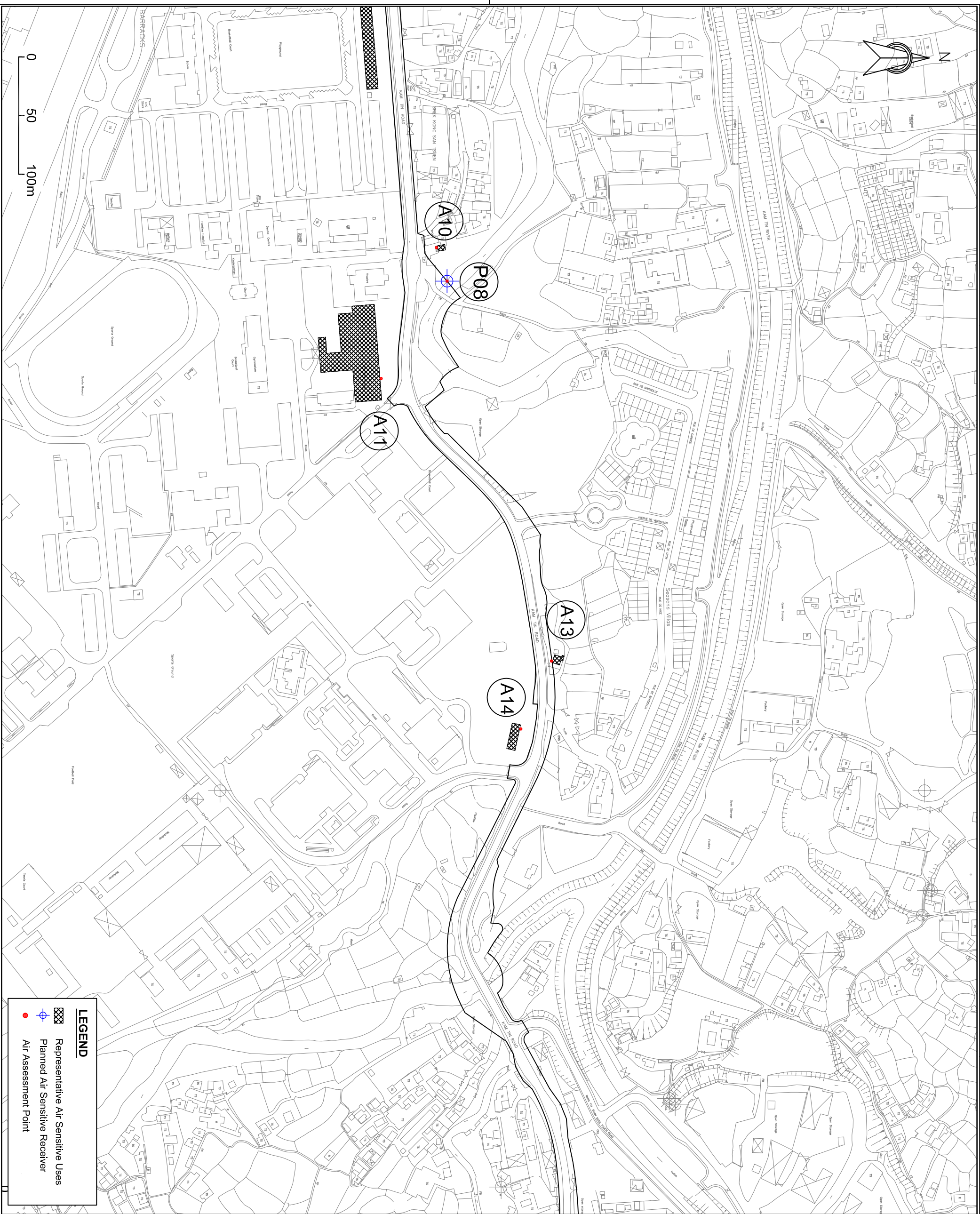
Client
 **HIGHWAYS DEPARTMENT WORKS DIVISION**

Consultants
Mannings (Asia) Consultants Ltd
In association with
BMT Asia Pacific


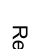

Project
 Agreement No. WD 7/2007
 Upgrading of Remaining Sections of Kam Tin Road & Lam Kam Road
 Environmental Impact Assessment

Title
 Locations of Representative Air Sensitive Receivers (Index)

Drawing No.	Revision
Figure 3.1	0



LEGEND

-  Representative Air Sensitive Uses
-  Planned Air Sensitive Receiver
-  Air Assessment Point

Rev.	Description of Revision	Date	Chk.

Client

 HIGHWAYS
 DEPARTMENT
 WORKS DIVISION

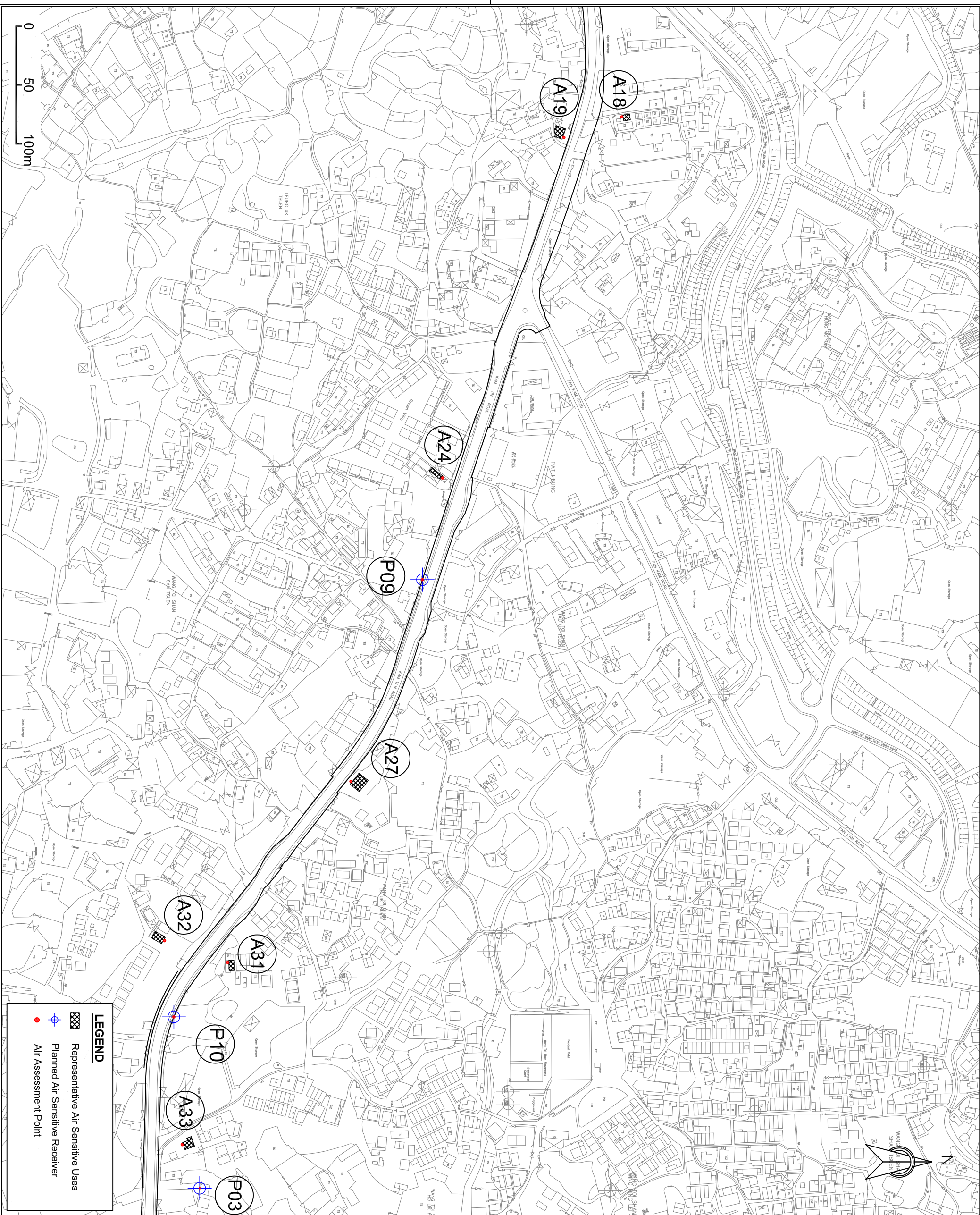
Consultants

Mannings (Asia) Consultants Ltd
In association with
BMT Asia Pacific


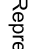
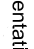
Project
 Agreement No. WD 7/2007
 Upgrading of Remaining Sections
 of Kam Tin Road & Lam Kam Road
 Environmental Impact Assessment

Title
 Locations of Representative
 Air Sensitive Receivers
 (Sheet 2 of 6)

Drawing No. Figure 3.1b	Revision 0
----------------------------	---------------

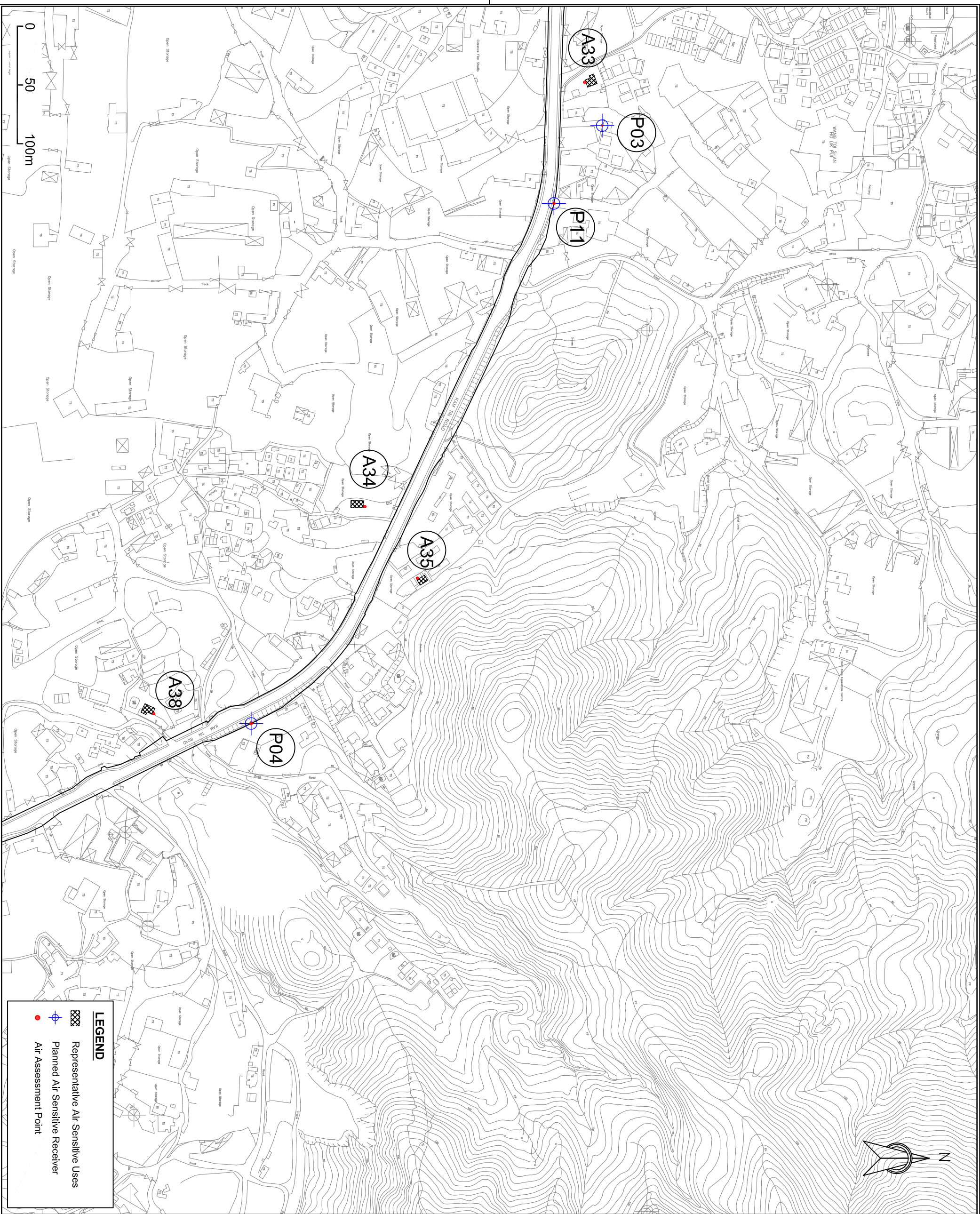


LEGEND

-  Representative Air Sensitive Uses
-  Planned Air Sensitive Receiver
-  Air Assessment Point

Rev.	Description of Revision	Date	Chk.

<p>Client</p> <p>HIGHWAYS DEPARTMENT WORKS DIVISION</p>
<p>Consultants</p> <p>Mannings (Asia) Consultants Ltd <i>In association with</i> BMT Asia Pacific</p>
<p>Project</p> <p>Agreement No. WD 7/2007 Upgrading of Remaining Sections of Kam Tin Road & Lam Kam Road Environmental Impact Assessment</p>
<p>Title</p> <p>Locations of Representative Air Sensitive Receivers (Sheet 3 of 6)</p>
<p>Drawing No. Figure 3.1c</p>
<p>Revision 0</p>



LEGEND

- Representative Air Sensitive Uses
- Planned Air Sensitive Receiver
- Air Assessment Point

Rev.	Description of Revision	Date	Chd.

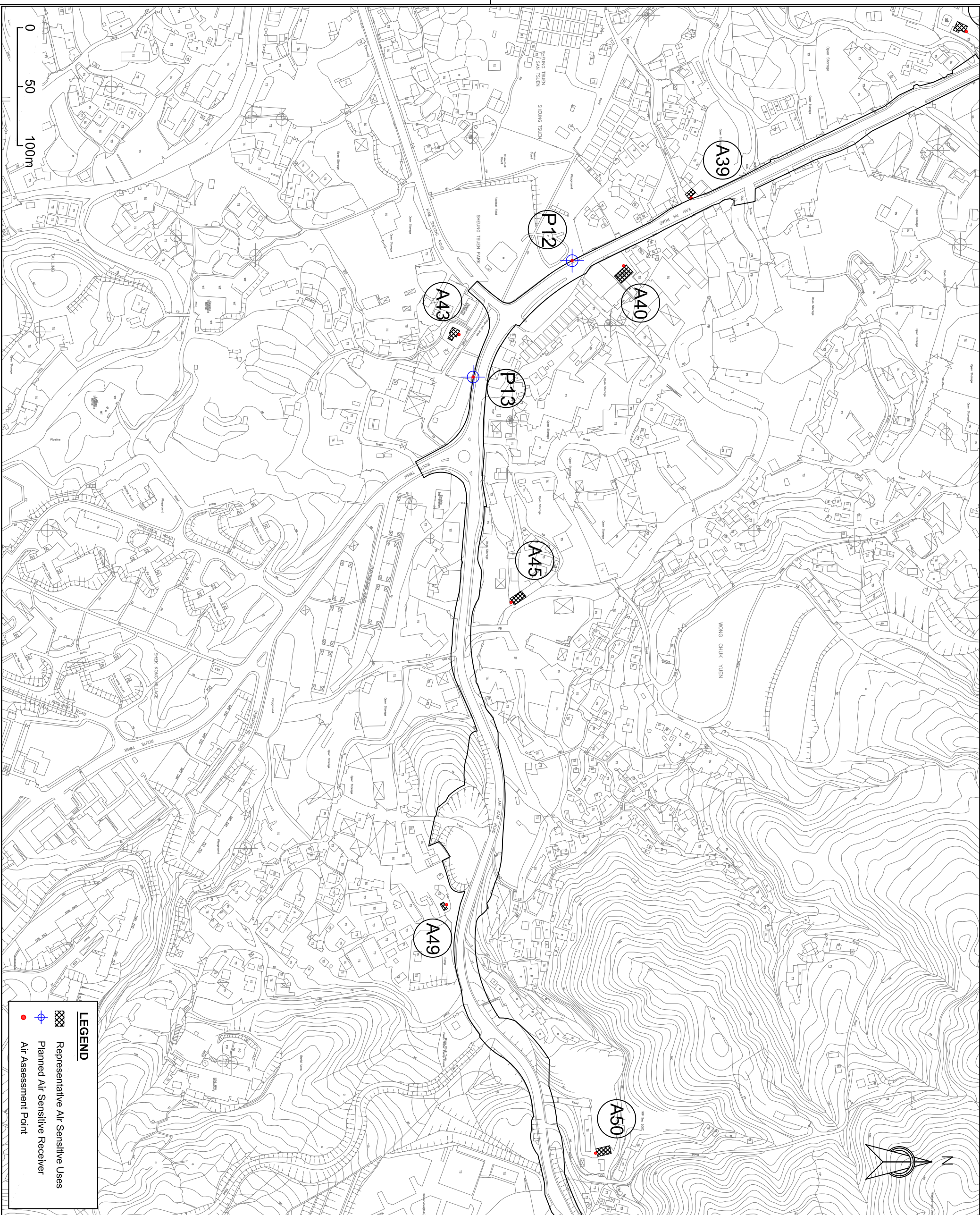
Client
HIGHWAYS DEPARTMENT WORKS DIVISION

Consultants
Mannings (Asia) Consultants Ltd
In association with
BMT Asia Pacific

Project
 Agreement No. WD 7/2007
 Upgrading of Remaining Sections of Kam Tin Road & Lam Kam Road Environmental Impact Assessment

Title
 Locations of Representative Air Sensitive Receivers (Sheet 4 of 6)

Drawing No. Figure 3.1d	Revision 0
----------------------------	---------------



Rev.	Description of Revision	Date	Chk.

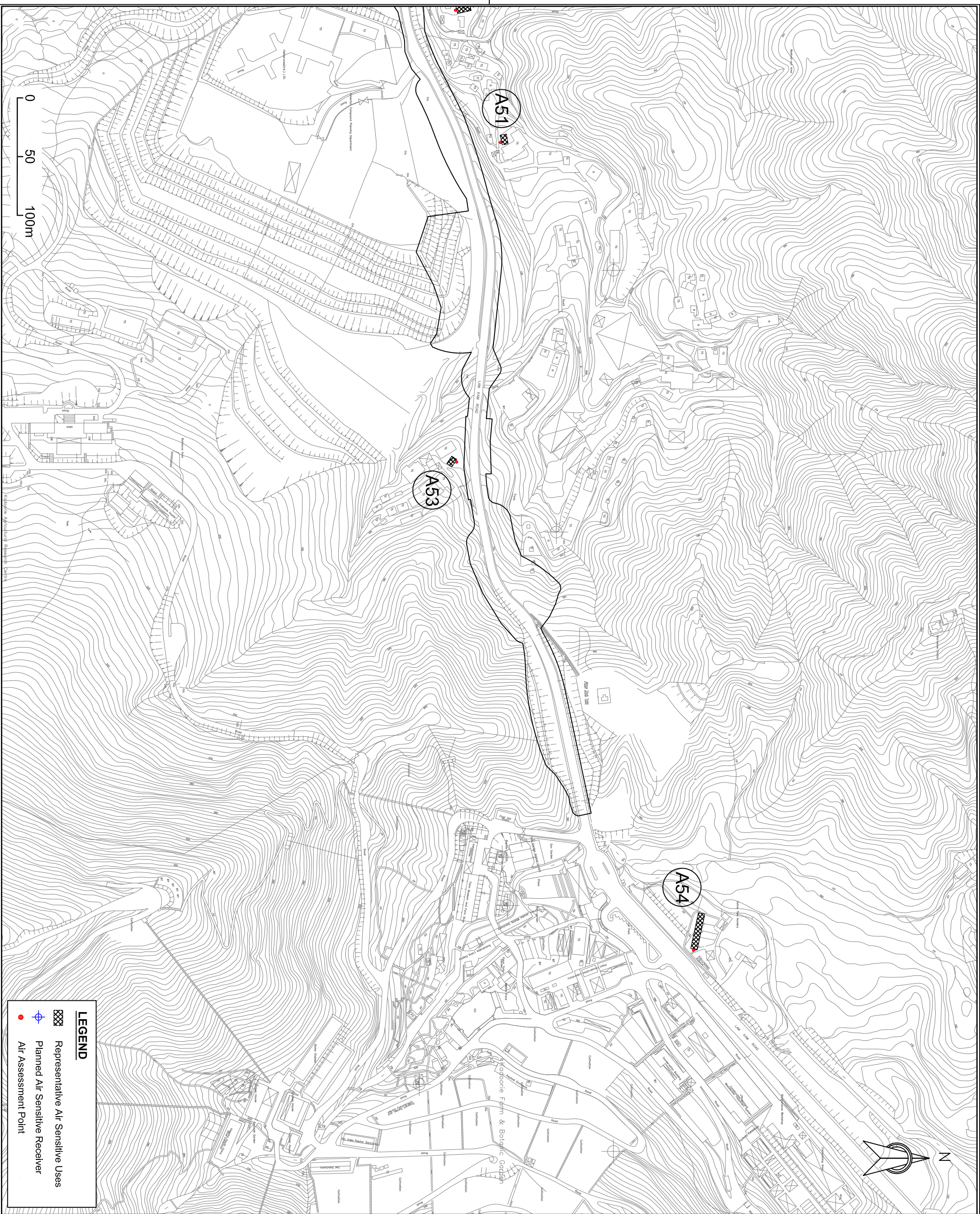
Client
HIGHWAYS DEPARTMENT WORKS DIVISION

Consultants
Mannings (Asia) Consultants Ltd
In association with
BMT Asia Pacific

Project
 Agreement No. WD 7/2007
 Upgrading of Remaining Sections of Kam Tin Road & Lam Kam Road Environmental Impact Assessment

Title
 Locations of Representative Air Sensitive Receivers
 (Sheet 5 of 6)

Drawing No. Figure 3.1e	Revision 0
----------------------------	---------------



Rev.	Description of Revision	Date	Chk.

Client
HIGHWAYS DEPARTMENT WORKS DIVISION

Consultants
Mannings (Asia) Consultants Ltd
In association with
BMT Asia Pacific

Project
 Agreement No. WD 7/2007
 Upgrading of Remaining Sections of Kam Tin Road & Lam Kam Road
 Environmental Impact Assessment

Title
 Locations of Representative Air Sensitive Receivers
 (Sheet 6 of 6)

Drawing No. Figure 3.1f	Revision 0
----------------------------	---------------